

DS5 User Interface (UI) Software: An Installation Guide

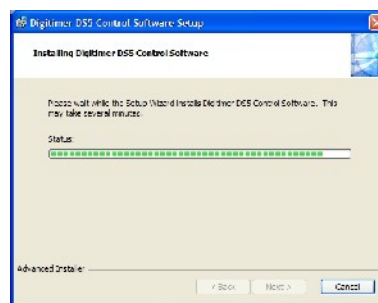
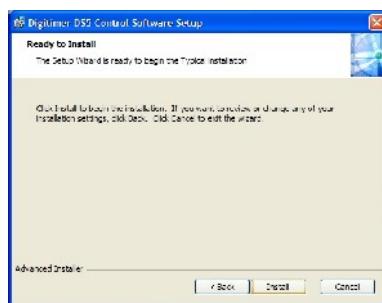
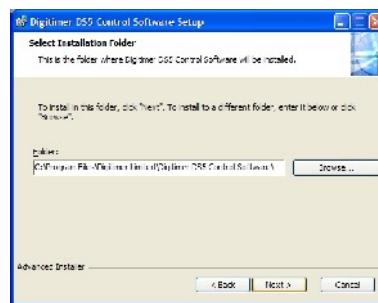
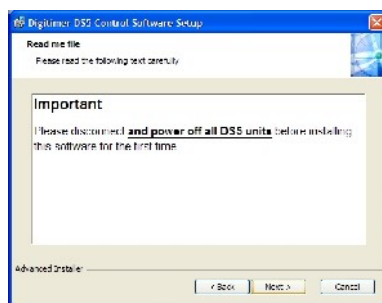
IMPORTANT - The DS5 should **NOT** be connected to the computer via the USB cable until the DS5 UI software has been successfully installed.

The first installation of the DS5 UI Software should be carried out on a computer which has an internet connection, as it may be necessary for the DS5 to install a remote firmware update as part of the installation process. Subsequent use of the DS5 UI Software does not require an internet enabled PC.

1. Please download the LATEST version of the Digitimer DS5 UI Software Installer from the Digitimer website (<http://update.digitimer.com/DS5/software/latest/>). Click once on “setup.exe” and save the file to a known location, such as the Desktop on the computer to be used with the DS5.



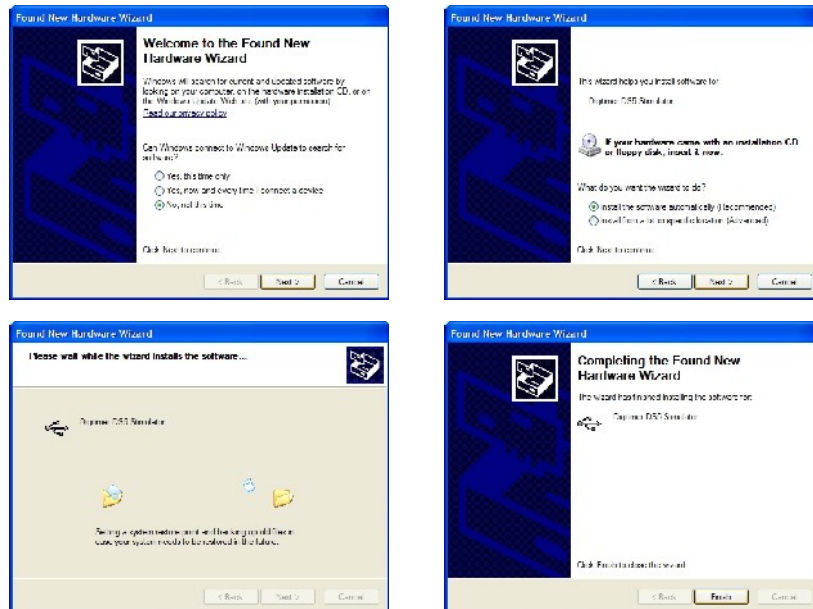
2. Double-click on setup.exe to install the DS5 UI Software. You may see a warning that the software publisher could not be verified, please ignore this by clicking on **Run** to proceed and then follow the on-screen instructions until the installation is completed.



- Note that if the DS5 UI Software was already installed on this computer, the installer will ask you if you wish to modify, repair or uninstall the previous installation.

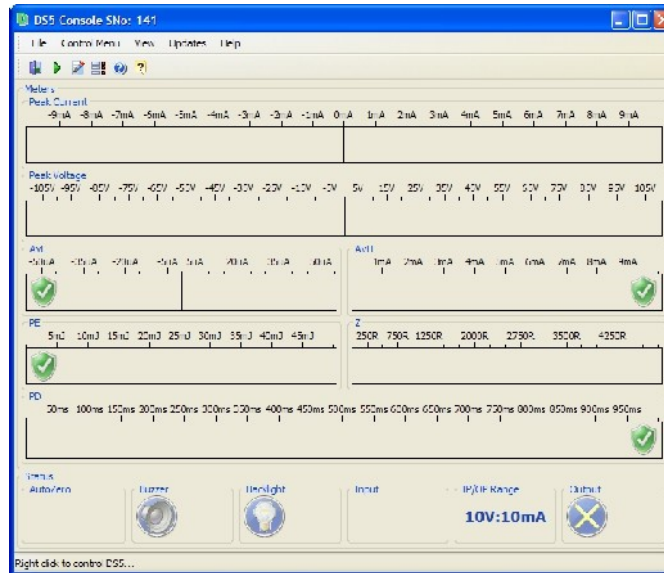
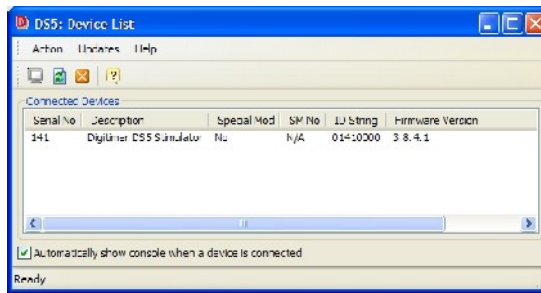


- Once the software is installed, the DS5 can now be connected to the computer via the supplied USB cable and powered on.
- Windows™ should alert you that new hardware (Digitimer DS5) has been connected. Please follow the hardware installation process according to the illustrations below.

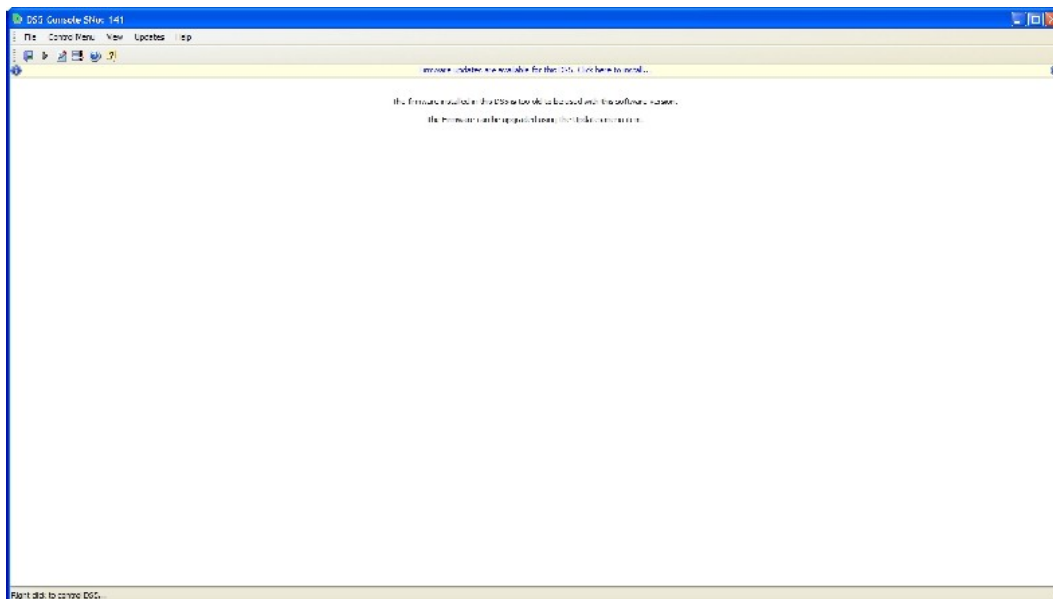


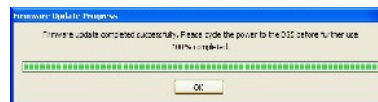
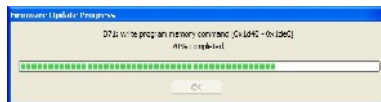
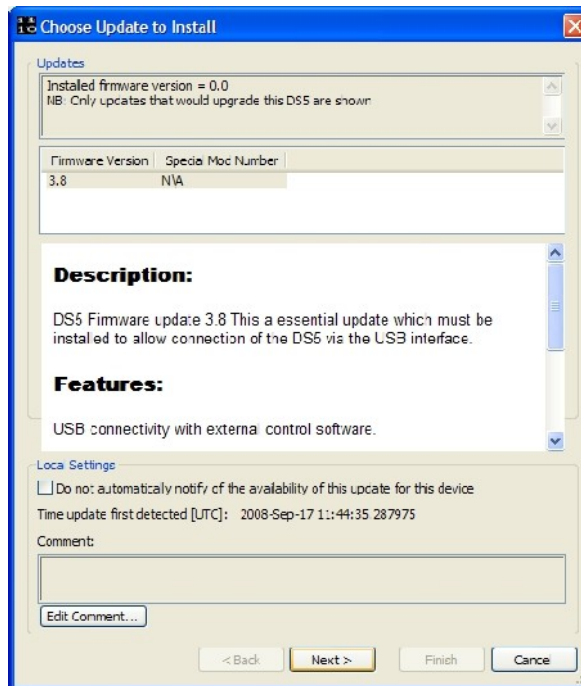
- Once the DS5 is installed, the DS5 UI Software can be run via the Windows Start Menu under **START > All Programs > Digitimer DS5 Control Software > DS5UI**
- Running the DS5UI opens two windows:-

- The DS5 Device List** - Lists information about the DS5 connected to the computer, including the firmware version and serial number.
- The DS5 Console** - Control Panel/Virtual Front Panel of the DS5.



- If the DS5 firmware is an early version it may not be supported by the latest DS5 UI Software. In this case, it will be necessary to update the firmware of the DS5 and this will be prompted in the DS5 Console Window (see below). The software will also ask you to check for updates of the DS UI Software version before proceeding with the update.





- Once the firmware update has been complete, the DS5 should be powered off and back on again. The restarted DS5 should be listed in the Device List window with the updated firmware indicated. It should now be possible to use the DS5 UI to adjust the settings and control some features of the DS5.

If you encounter any problems during the software/firmware update process, please contact Digitimer or your local representative.

Digitimer Ltd, 37 Hydeway, Welwyn Garden City, AL7 3BE, UK

Tel: +44(0)1707 328347

Fax: +44(0)1707 373153

Email: sales@digitimer.com

N:\Docs\Company\Manuals\DS5\ISSUE-4\DS5UI_Installation Guide_2009_01.odt