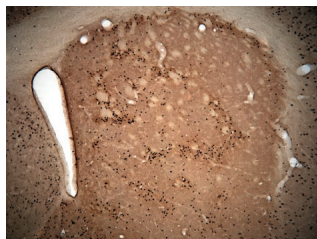


"I can perfuse up to five animals an hour, plus it costs no more than a tube of enzyme."

**Dr. Yien Ming Kuo**

University of California, San Francisco

**Mouse brain striatal section**



"Easy switch from saline to fixative—just turn the stopcock"

**Dr. Sharon Smart**

University of California, San Francisco

**2-way Manual Stopcock**



Fig. A. Easy one-handed operation to switch solutions.

**Ordering Information:**

- 11-140** In Vivo Perfusion System 140ml
- 11-04-140** Double In Vivo Perfusion System 4x 140ml
- 11-800** In Vivo Perfusion System 800ml

We've built a great fixation system so you don't have to.



**In Vivo Manual Gravity Perfusion Systems**

Rat 800ml (91 cm tall) and mouse 140ml (61 cm tall) systems shown

- **Consistent results**  
Steady gravity-fed delivery of buffer and fixative results in complete perfusion.
- **Easy to setup, use and clean**  
Complete system with everything down to the needles. Fits in standard hoods.
- **Fraction of the cost of a peristaltic pump and more reliable**

AutoMate Scientific is providing an option for the scientist who would rather do science than design a system, source parts, phone, buy, etc. Let us take the guesswork out of your new animal fixation system.

One or two users can perfuse two mice simultaneously with the Double In Vivo system. Four reservoirs and two stopcocks are mounted for two independent wash buffer and fixative deliveries on the same ringstand.

© 2004 AutoMate Scientific, Inc.



800.998.MATE | [www.autom8.com](http://www.autom8.com) | 336 Baden Street, San Francisco, CA 94131 USA  
tel 415.239.6080 | fax 415.239.6801 | e-mail [info@autom8.com](mailto:info@autom8.com)